

PRODUCT DESCRIPTION

Solve your echo and reverberation issues with an Acoustics America Acoustic Ceiling Baffle. These fabric-wrapped, sound absorbing vertical baffles are available in a wide array of colors, sizes and thicknesses, and give you the freedom to absorb excess ambient noise according to your design and aesthetic needs. By incorporating ceiling baffles, you can ensure your space not only looks appealing but also sounds much better.

PRODUCT FEATURES

Maximum performance: Our ceiling baffles are available in a 1" or 2" thick high-density (6 PCF) fiberglass core. The core is wrapped in acoustically transparent fabric to ensure optimal sound performance. The fiberglass core offers excellent absorption for your most demanding treatment applications.

More colors: We offer our ceiling baffles in a wide range of colors from our Acoustics America fabric line—*A vibrant spectrum of colors inspired by American landscapes.*

More sizes: Acoustic ceiling baffles are available in 6 sizes.

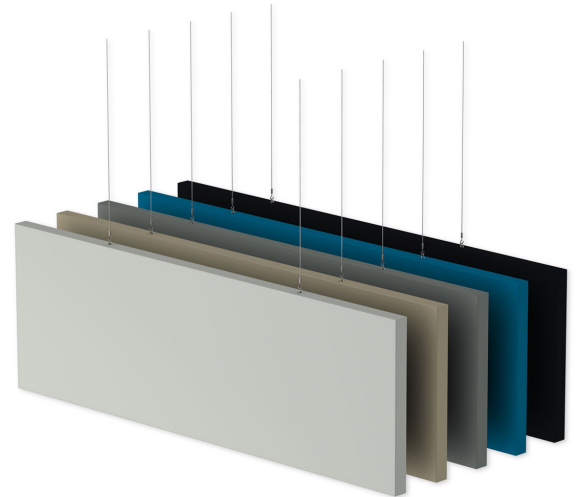
Multiple thicknesses: Our panels are available in two thicknesses for your unique treatment needs:

- 1" inch fabric-wrapped ceiling baffles are ideal for residential and light commercial applications.
- 2" thick acoustic baffles are optimal for heavy commercial spaces such as large gathering areas, music venues, restaurants and open office perimeters.
- A 2-inch thick baffle core will also help you achieve maximum absorption per square foot of space.

Mounting option: Each acoustic ceiling baffle includes 2 corkscrews. Suspend from your ceiling using our adjustable ceiling cloud hanging wire (sold separately). **Ceiling-side attachment hardware is not included.**

Safety and peace of mind: These panels are Class A fire rated (the highest rating possible) for use in indoor applications.

Proudly manufactured in the USA.





SOUND ABSORPTION AT VARIOUS FREQUENCIES

Thickness	125 Hz	250 Hz	500 Hz	1000 Hz	2000 Hz	4000 Hz
Fiberglass 1" (.85 NRC)	0.14	0.27	0.80	1.11	1.14	1.14
Fiberglass 2" (1.15 NRC)	0.22	0.81	1.24	1.30	1.21	1.16

FIBERGLASS CORE: TECHNICAL INFORMATION AND SPECIFICATIONS

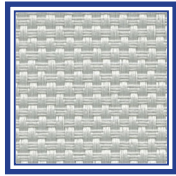
Core	Acoustically Rated Fiberglass
Core Density	6 pounds per cubic foot (6 PCF)
Design	Frameless
Flammability Rating	Class A
Manufacturing Tolerance	+/- 1/4" from centerline
Architectural Product Reference	Sound absorbing ceiling unit
Fabric Material	Polyester Blend



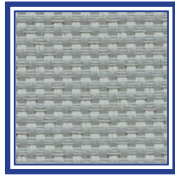
ACOUSTICS AMERICA FABRICS



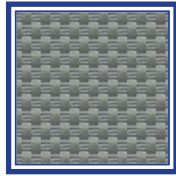
SEA FOAM
WHITE



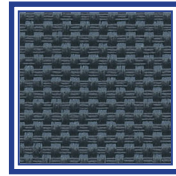
FULL MOON
SILVER



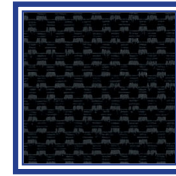
INDUSTRIAL
STEEL GREY



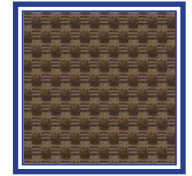
NATURAL
STONE GREY



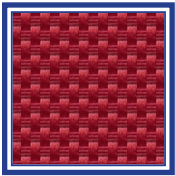
FREEDOM
GREY



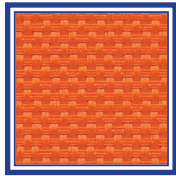
MIDNIGHT
BLACK



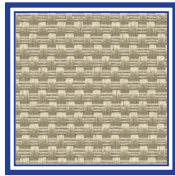
AMERICAN
WALNUT



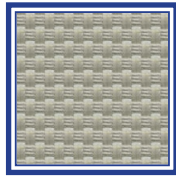
DELICIOUS
APPLE RED



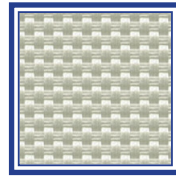
FALL HARVEST
ORANGE



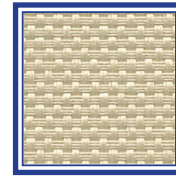
HEARTLAND
WHEAT



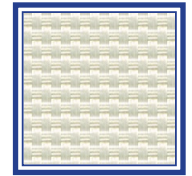
BARNWOOD
GREY



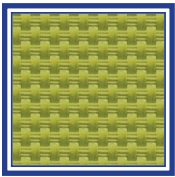
SAND SILVER



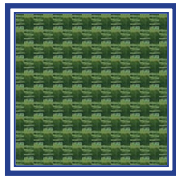
MOJAVE TAN



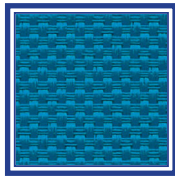
COUNTRY
CREAM



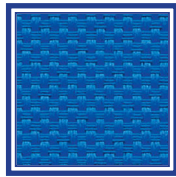
SAN JOAQUIN
OLIVE



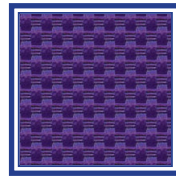
SILENT
EVERGREEN



GREAT LAKES
BLUE



WESTERN SKY
BLUE



WILD PLUM

SPECIFICATIONS

Content:

53% post-consumer recycled polyester
47% polyester

Cleaning Code:

Standard Care Label W-S. Clean with water-based cleaning agents, foam or pure, water-free solvents. Vacuuming or light brushing is recommended to prevent dust and soil buildup. May also be disinfected with hydrogen peroxide, alcohol, and quaternary ammonium (quat) based cleaners.

Performance:

Colorfastness to Light (AATCC 16.3 Option 3) Grade 4 min. at 40 hours
Colorfastness to Crocking (AATCC 8) Grade 4 min. dry & Grade 3 min. wet
Breaking Strength (ASTM D5034) 270 lbf warp and 150 lbf fill
Flammability (ASTM E84) Class I or A