

PRODUCT DESCRIPTION

Solve your echo and reverberation issues with an Acoustics America Acoustic Ceiling Cloud. These fabric-wrapped, sound absorbing clouds are available in a wide array of colors, sizes and thicknesses, and give you the freedom to absorb excess ambient noise according to your design and aesthetic needs. Once you suspend these clouds from your ceiling, you can listen clearly to the sounds that matter.

PRODUCT FEATURES

Maximum performance: Our clouds are offered in both high-density (6 PCF) fiberglass and eco-friendly polyester (available for 1 inch thickness). Both core options provide exceptional acoustic performance, and each core is designed to meet your specific acoustic needs.

High performance fiberglass: With its dense core, fiberglass provides outstanding sound absorption, making them ideal for the most demanding acoustic treatment scenarios.

Sustainable polyester: Durable, impact-resistant and eco-friendly, polyester clouds are 100% recyclable and made from 60% recycled material. They resist moisture and bacteria.

More colors: We offer our panels in a wide range of colors across 4 fabric lines:

- *Classic 700 Series* – Timeless colors with a warm aesthetic
- *Acoustics America* – A vibrant spectrum of colors inspired by American landscapes.
- *Guilford of Maine Anchorage* – Features a unique crepe texture often favored by designers for its distinctive look.
- *Guilford of Maine FR701* – Finely woven with a smooth texture, this designer-favorite fabric offers a refined look.

More sizes: These clouds are available in 19 sizes, from 24" x 24" (2' x 2') all the way up to 120" x 48" (10' x 4').

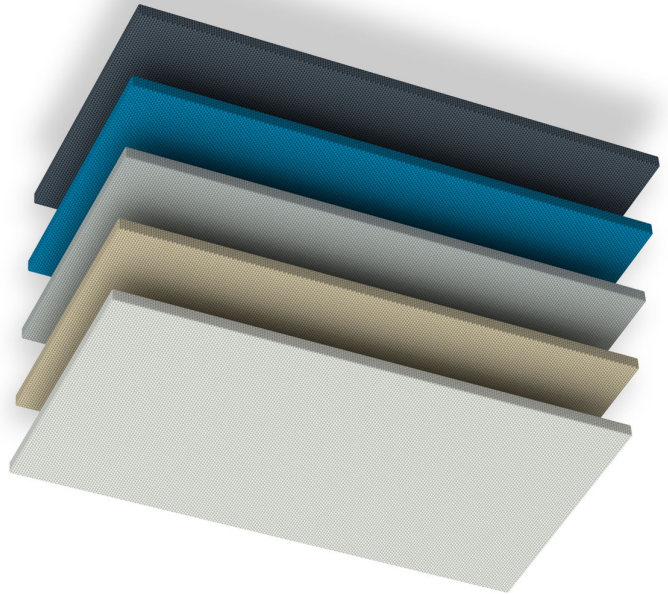
Multiple thicknesses: Our clouds are available in two thicknesses for your unique treatment needs:

- 1 inch clouds are an ideal for residential and light commercial applications.
- 2" thick acoustic ceiling clouds are optimal for heavy commercial spaces such as large gathering areas, music venues, restaurants and open office environments.
- A 2 inch thick cloud will also help you achieve maximum absorption per square foot of space.

Easy installation: Each acoustic cloud includes Rotofast™ Cloud Anchors. Suspend from your ceiling using our adjustable ceiling cloud hanging wire (sold separately). Ceiling-side attachment is not included.

Safety and peace of mind: These clouds are Class A fire rated (the highest rating possible) for use in indoor applications.

Proudly manufactured in the USA.



SOUND ABSORPTION AT VARIOUS FREQUENCIES

Thickness	125 Hz	250 Hz	500 Hz	1000 Hz	2000 Hz	4000 Hz
Fiberglass 1" (.85 NRC)	.14	.27	.80	1.11	1.14	1.14
Fiberglass 2" (1.15 NRC)	.22	.81	1.24	1.30	1.21	1.16
Polyester 1" (.75 NRC)	.06	.34	.68	.93	.98	.97

FIBERGLASS CORE: TECHNICAL INFORMATION AND SPECIFICATIONS

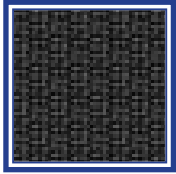
Core	Acoustically Rated Fiberglass
Core Density	6 pounds per cubic foot (6 PCF)
Design	Frameless
Flammability Rating	Class A
Manufacturing Tolerance	+/-1/4" from centerline
Architectural Product Reference	Sound Absorbing Wall Unit
Fabric Material	Polyester Blend

POLYESTER CORE: TECHNICAL INFORMATION AND SPECIFICATIONS

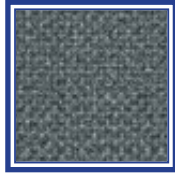
Core	Polyester
Core Density	5 pounds per cubic foot (5 PCF)
Design	Frameless
Flammability Rating	Class A
Manufacturing Tolerance	+/-1/4" from centerline
Architectural Product Reference	Sound Absorbing Wall Unit
Fabric Material	Polyester Blend



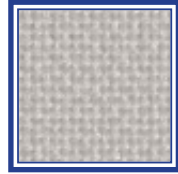
CLASSIC 700 SERIES FABRICS



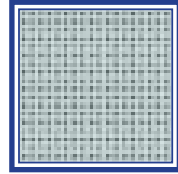
**CLASSIC
BLACK**



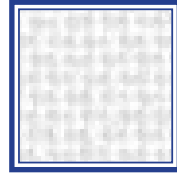
**CLASSIC
BLUESTONE
SLATE**



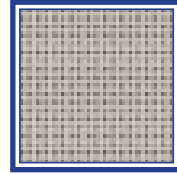
**CLASSIC LIGHT
OAT**



**CLASSIC
PATINA GREY**



**CLASSIC PURE
WHITE**

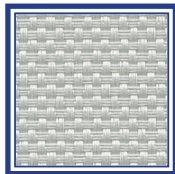


**CLASSIC
TAN**

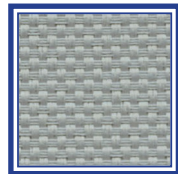
ACOUSTICS AMERICA FABRICS



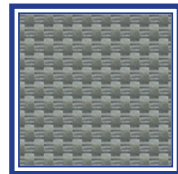
**SEA FOAM
WHITE**



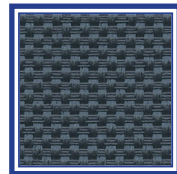
**FULL MOON
SILVER**



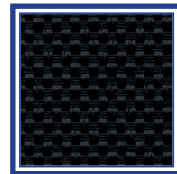
**INDUSTRIAL
STEEL GREY**



**NATURAL
STONE GREY**



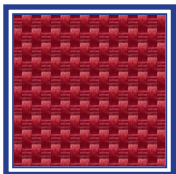
**FREEDOM
GREY**



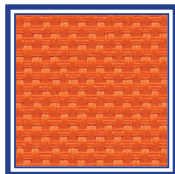
**MIDNIGHT
BLACK**



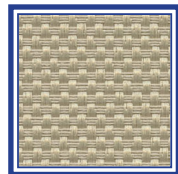
**AMERICAN
WALNUT**



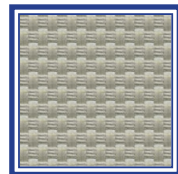
**DELICIOUS
APPLE RED**



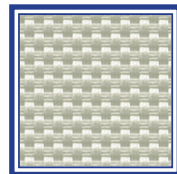
**FALL HARVEST
ORANGE**



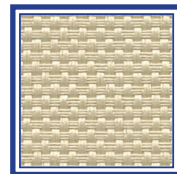
**HEARTLAND
WHEAT**



**BARNWOOD
GREY**



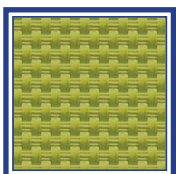
SAND SILVER



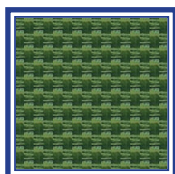
MOJAVE TAN



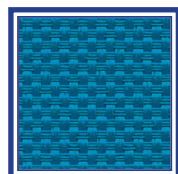
**COUNTRY
CREAM**



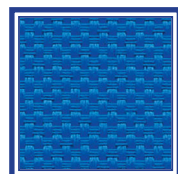
**SAN JOAQUIN
OLIVE**



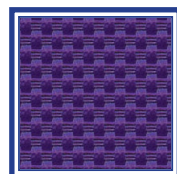
**SILENT
EVERGREEN**



**GREAT LAKES
BLUE**



**WESTERN SKY
BLUE**



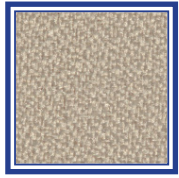
WILD PLUM



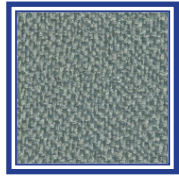
GUILFORD OF MAINE ANCHORAGE-2335 FABRICS



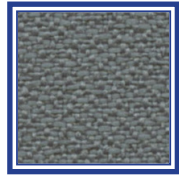
WHITE #2664



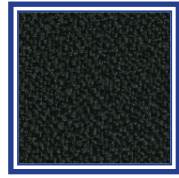
BIRCH #2129



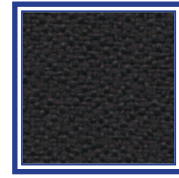
SLATE #2017



WOLF #2027



GRAPHITE
#2079



ONYX #2016

Specifications

Content	65% pre-consumer recycled polyester 35% post-consumer recycled polyester
Weight	2334 - 13.1 ± 1.0 oz./lin. yd 2335 - 15.0 ± 1.0 oz./lin. yd
Width	2334 - 54" min. useable 2335 - 66" min. useable
Repeat	none

Cleaning Code

Standard Care Label W-S. Clean with water based cleaning agents, foam or pure, water free solvents. Vacuuming or light brushing is recommended to prevent dust and soil buildup. May also be disinfected with hydrogen peroxide, alcohol, and quaternary ammonium (quat) based cleaners.

Miscellaneous


- Application testing of this product is recommended.
- Colors may vary between dye lots.
- Please specify when ordering whether 54" or 66" width is needed. Dye lots may vary. Differences may also occur between corresponding colors of Anchorage 2335 and Open House 2334.


Proudly woven in North America supporting our local communities.

Sustainability


100% recycled and recyclable

Performance


 Colorfastness to light (AATCC 16.3 Option 3)
Grade 4 min. at 40 hours


 Colorfastness to crocking (AATCC 8)
Grade 4 min. dry & Grade 3 min. wet

Breaking Strength (ASTM D5034)
275 lbf min. warp and fill

 Seam Slippage (ASTM D4034)
50 lbf min. warp and fill

Pilling Resistance (ASTM D3511)
Class 4 min.


 Flammability
CA Technical Bulletin 117-2013 Section 1
ASTM E84 Class I or A

 * Abrasion (ASTM D4157)
250,000 double rubs min. cotton duck

Acoustical Performance

Our acoustic fabrics are all acoustically transparent. This represents the amount of sound that passes through the fabric.

Acoustic Transparency: 85%

 This pattern is included in the underwriters laboratory panel fabric recognition program. Additional testing of this U.L. recognized fabric is not required on approved panels from participating manufacturers.

*Multiple factors affect fabric durability and appearance retention, including end-user application and proper maintenance. Wyzenbeek results above 100,000 double rubs have not been shown to be an indicator of increased lifespan.

Certification Marks owned by the Association for Contract Textiles, Inc.



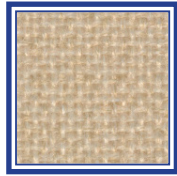
GUILFORD OF MAINE FR701-2100 FABRICS



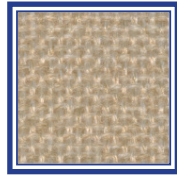
WHITE #224



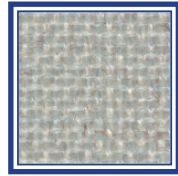
EGGSHELL #144



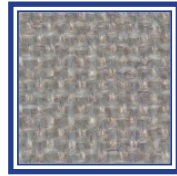
BONE #748



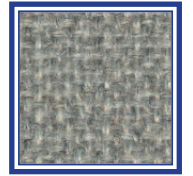
WHEAT #130



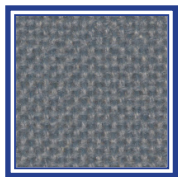
SILVER PAPIER #538



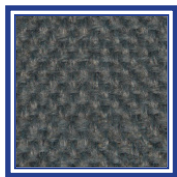
SILVER NEUTRAL #406



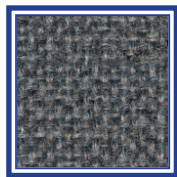
GREY MIX #238



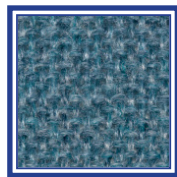
STEEL GREY #471



FLANNEL #795



MEDIUM GREY #298



WEDGEWOOD #150



BLACK #408

Specifications

Content	100% post-consumer recycled polyester
Weight	16.0 ± 0.5 oz./lin. yd
Width	66" min. useable
Repeat	none

Cleaning Code

Standard Care Label W-S. Clean with water based cleaning agents, foam or pure, water free solvents. Vacuuming or light brushing is recommended to prevent dust and soil buildup.

Bleach Cleanable - May be cleaned with a 10% bleach-to-water solution. Rinse well after cleaning. May also be disinfected with hydrogen peroxide, alcohol, and quaternary ammonium (quat) based cleaners.

Miscellaneous

Application testing of this product is recommended. Colors may vary between dye lots. This is a non-directional fabric.

Proudly woven in North America supporting our local communities.

Sustainability

100% recycled and recyclable

Performance



Colorfastness to light (AATCC 16.3 Option 3)
Grade 4 min. at 40 hours



Colorfastness to crocking (AATCC 8)
Grade 4 min. dry & Grade 3 min. wet



Breaking Strength (ASTM D5034)
150 lbf min. warp and fill



Flammability
ASTM E84 Class I or A

Acoustical Performance

Our acoustic fabrics are all acoustically transparent. This represents the amount of sound that passes through the fabric.

Acoustic Transparency: 95%

For more detailed results, please consult our website.



This pattern is included in the underwriters laboratory panel fabric recognition program. Additional testing of this U.L. recognized fabric is not required on approved panels from participating manufacturers.

Certification Marks owned by the Association for Contract Textiles, Inc.