



### PRODUCT DESCRIPTION

Solve your echo and reverberation issues with an Acoustics America Acoustic Ceiling Cloud. These fabric-wrapped, sound absorbing clouds are available in a wide array of colors, sizes and thicknesses, and give you the freedom to absorb excess ambient noise according to your design and aesthetic needs. Once you suspend these clouds from your ceiling, you can listen clearly to the sounds that matter.

### PRODUCT FEATURES

**Maximum performance:** Our clouds are constructed with a high-density (6 PCF) fiberglass core, and wrapped in acoustically-transparent fabric. This high-density core offers excellent absorption for your most demanding treatment applications.

**More colors:** We offer our panels in a wide range of colors across 4 fabric lines:

- *Classic 700 Series* – Timeless colors with a warm aesthetic
- *Acoustics America* – A vibrant spectrum of colors inspired by American landscapes.
- *Guilford of Maine Anchorage* – Features a unique crepe texture often favored by designers for its distinctive look.
- *Guilford of Maine FR701* – Finely woven with a smooth texture, this designer-favorite fabric offers a refined look.

**More sizes:** These clouds are available in 19 sizes, from 24" x 24" (2' x 2') all the way up to 120" x 48" (10' x 4').

**Multiple thicknesses:** Our clouds are available in two thicknesses for your unique treatment needs:

- 1" inch clouds are an ideal for residential and light commercial applications.
- 2" thick acoustic ceiling clouds are optimal for heavy commercial spaces such as large gathering areas, music venues, restaurants and open office perimeters.
- A 2 inch thickness will also help you achieve maximum absorption per square foot of space.

**Easy installation:** Suspend these acoustic clouds from your ceiling with included Rotofast™ Cloud Anchors.

**Safety and peace of mind:** These clouds are Class A fire rated (the highest rating possible) for use in indoor applications.

**Proudly made in the USA.**





**SOUND ABSORPTION AT VARIOUS FREQUENCIES**

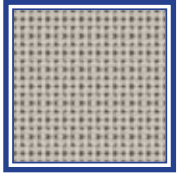
<b>1" (.85 NRC)</b>	<b>.14</b>	<b>.27</b>	<b>.80</b>	<b>1.11</b>	<b>1.14</b>	<b>1.14</b>
<b>2" (1.15 NRC)</b>	<b>.22</b>	<b>.81</b>	<b>1.24</b>	<b>1.30</b>	<b>1.21</b>	<b>1.16</b>

**TECHNICAL INFORMATION AND SPECIFICATIONS**

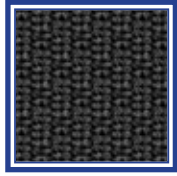
<b>Core</b>	<b>Acoustically Rated Fiberglass</b>
<b>Core Density</b>	<b>6 pounds per cubic foot (6 PCF)</b>
<b>Design</b>	<b>Frameless</b>
<b>Flammability Rating</b>	<b>Class A</b>
<b>Manufacturing Tolerance</b>	<b>+/-1/4" from centerline</b>
<b>Architectural Product Reference</b>	<b>Sound Absorbing Wall Unit</b>
<b>Fabric Material</b>	<b>Polyester Blend</b>



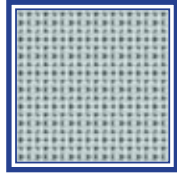
**CLASSIC 700 SERIES FABRICS**



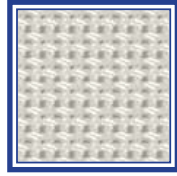
**CLASSIC  
TAN**



**CLASSIC  
BLACK**



**CLASSIC  
PATINA GREY**

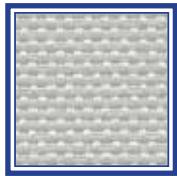


**CLASSIC WHITE**

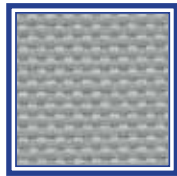
**ACOUSTICS AMERICA FABRICS**



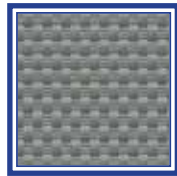
**SEA FOAM  
WHITE**



**FULL MOON  
SILVER**



**INDUSTRIAL  
STEEL GREY**



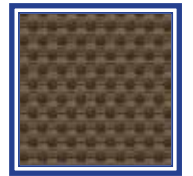
**NATURAL  
STONE GREY**



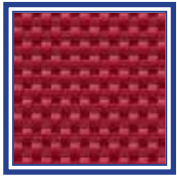
**FREEDOM  
GREY**



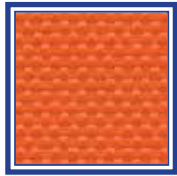
**MIDNIGHT  
BLACK**



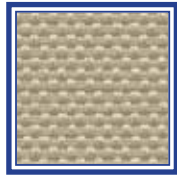
**AMERICAN  
WALNUT**



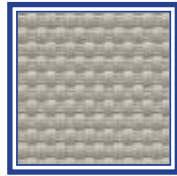
**DELICIOUS  
APPLE RED**



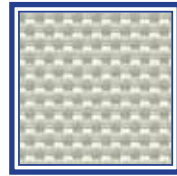
**FALL HARVEST  
ORANGE**



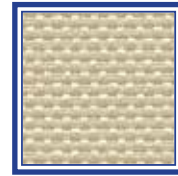
**HEARTLAND  
WHEAT**



**BARNWOOD  
GREY**



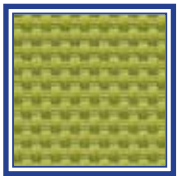
**SAND SILVER**



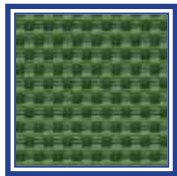
**MOJAVE TAN**



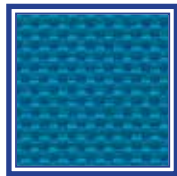
**COUNTRY  
CREAM**



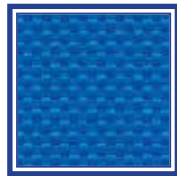
**SAN JOAQUIN  
OLIVE**



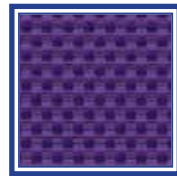
**SILENT  
EVERGREEN**



**GREAT LAKES  
BLUE**



**WESTERN SKY  
BLUE**



**WILD PLUM**



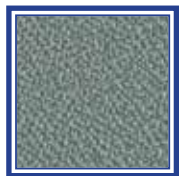
### GUILFORD OF MAINE ANCHORAGE-2335 FABRICS



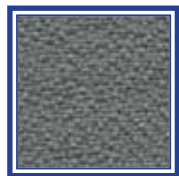
WHITE #2664



BIRCH #2129



SLATE #2017



WOLF #2027



GRAPHITE  
#2079



ONYX #2016

### Specifications

Content	65% pre-consumer recycled polyester 35% post-consumer recycled polyester
Weight	2334 - 13.1 ± 1.0 oz./lin. yd 2335 - 15.0 ± 1.0 oz./lin. yd
Width	2334 - 54" min. useable 2335 - 66" min. useable
Repeat	none

### Cleaning Code

Standard Care Label W-S. Clean with water based cleaning agents, foam or pure, water free solvents. Vacuuming or light brushing is recommended to prevent dust and soil buildup. May also be disinfected with hydrogen peroxide, alcohol, and quaternary ammonium (quat) based cleaners.

### Miscellaneous

- Application testing of this product is recommended.
- Colors may vary between dye lots.
- Please specify when ordering whether 54" or 66" width is needed. Dye lots may vary. Differences may also occur between corresponding colors of Anchorage 2335 and Open House 2334.

Proudly woven in North America supporting our local communities.

### Sustainability

100% recycled and recyclable

### Performance



Colorfastness to light (AATCC 16.3 Option 3)  
Grade 4 min. at 40 hours



Colorfastness to crocking (AATCC 8)  
Grade 4 min. dry & Grade 3 min. wet

Breaking Strength (ASTM D5034)  
275 lbf min. warp and fill



Seam Slippage (ASTM D4034)  
50 lbf min. warp and fill

Pilling Resistance (ASTM D3511)  
Class 4 min.



Flammability  
CA Technical Bulletin 117-2013 Section 1  
ASTM E84 Class I or A



Abrasion (ASTM D4157)  
250,000 double rubs min. cotton duck

### Acoustical Performance

Our acoustic fabrics are all acoustically transparent. This represents the amount of sound that passes through the fabric.

Acoustic Transparency: 85%



This pattern is included in the underwriters laboratory panel fabric recognition program. Additional testing of this U.L. recognized fabric is not required on approved panels from participating manufacturers.

\*Multiple factors affect fabric durability and appearance retention, including end-user application and proper maintenance. Wyzenbeek results above 100,000 double rubs have not been shown to be an indicator of increased lifespan.

Certification Marks owned by the Association for Contract Textiles, Inc.



### GUILFORD OF MAINE FR701-2100 FABRICS



WHITE #224



EGGSHELL  
#144



BONE #748



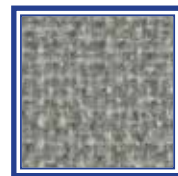
WHEAT #130



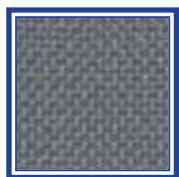
SILVER PAPIER  
#538



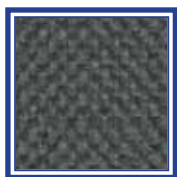
SILVER  
NEUTRAL #406



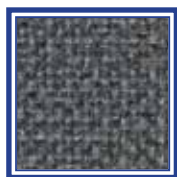
GREY MIX #238



STEEL GREY  
#471



FLANNEL #795



MEDIUM GREY  
#298



WEDGEWOOD  
#150



BLACK #408

### Specifications

Content	100% post-consumer recycled polyester
Weight	16.0 ± 0.5 oz./lin. yd
Width	66" min. useable
Repeat	none

### Cleaning Code

Standard Care Label W-S. Clean with water based cleaning agents, foam or pure, water free solvents. Vacuuming or light brushing is recommended to prevent dust and soil buildup.

Bleach Cleanable - May be cleaned with a 10% bleach-to-water solution. Rinse well after cleaning. May also be disinfected with hydrogen peroxide, alcohol, and quaternary ammonium (quat) based cleaners.

### Miscellaneous

Application testing of this product is recommended. Colors may vary between dye lots. This is a non-directional fabric.

Proudly woven in North America supporting our local communities.

### Sustainability

100% recycled and recyclable

### Performance



Colorfastness to light (AATCC 16.3 Option 3)  
Grade 4 min. at 40 hours



Colorfastness to crocking (AATCC 8)  
Grade 4 min. dry & Grade 3 min. wet



Breaking Strength (ASTM D5034)  
150 lbf min. warp and fill



Flammability  
ASTM E84 Class I or A

### Acoustical Performance

Our acoustic fabrics are all acoustically transparent. This represents the amount of sound that passes through the fabric.

Acoustic Transparency: 95%

For more detailed results, please consult our website.



This pattern is included in the underwriters laboratory panel fabric recognition program. Additional testing of this U.L. recognized fabric is not required on approved panels from participating manufacturers.

Certification Marks owned by the Association for Contract Textiles, Inc.