

## PRODUCT DESCRIPTION

Solve your echo and reverberation issues with an Acoustics America Acoustic Panel. These fabric-wrapped, sound absorbing panels are available in a wide array of colors, sizes and thicknesses, and give you the freedom to absorb excess ambient noise according to your design and aesthetic needs. Once you mount these panels on your walls, you can listen clearly to the sounds that matter.

## PRODUCT FEATURES

**Maximum performance:** Our panels are constructed with a high-density (6 PCF) fiberglass core, and wrapped in acoustically-transparent fabric. This high-density core offers excellent absorption for your most demanding treatment applications.

**More colors:** We offer our panels in 41 colors across 1 fabric lines:

- *Classic 700 Series* fabric line: 4 colors.
- *Acoustics America* fabric line: 19 colors.
- *Guilford of Maine Anchorage* fabric line: 6 colors.
- *Guilford of Maine FR701* fabric line: 12 colors.

**More sizes:** These panels are available in 20 sizes, from 12" x 12" (1' x 1') all the way up to 120" x 48" (10' x 4').

**Multiple thicknesses:** Our panels are available in two thicknesses for your unique treatment needs:

- 1" inch panels are an ideal for residential and light commercial applications.
- 2" thick acoustic panels are optimal for heavy commercial spaces such as large gathering areas, music venues, restaurants and open office perimeters.
- A 2 inch thickness will also help you achieve maximum absorption per square foot of space.

**Multiple mounting options:** We offer two different mounting options, tailored to your application.

- Impaling clips: Suitable for wall-mount applications. Easy to install and included with your order, by default.
- Rotofast™ Snap-On anchors: This mounting option is suited for both wall and ceiling direct-mount applications. This option also does not require adhesive.

**Safety and peace of mind:** These panels are Class A fire rated (the highest rating possible) for use in indoor applications.

**Proudly made in the USA.**



**SOUND ABSORPTION AT VARIOUS FREQUENCIES**

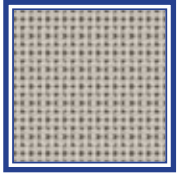
Thickness	125	250	500	1000	2000	4000
1" (.85 NRC)	.14	.27	.80	1.11	1.14	1.14
2" (1.15 NRC)	.22	.81	1.24	1.30	1.21	1.16

**TECHNICAL INFORMATION AND SPECIFICATIONS**

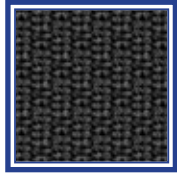
Core	Acoustically Rated Fiberglass
Core Density	6 pounds per cubic foot (6 PCF)
Design	Frameless
Flammability Rating	Class A
Manufacturing Tolerance	+1/4" from centerline
Architectural Product Reference	Sound Absorbing Wall Unit
Fabric Material	Polyester Blend



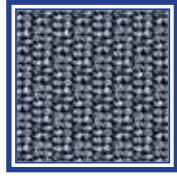
## CLASSIC 700 SERIES FABRICS



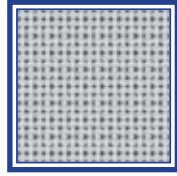
CLASSIC  
TAN



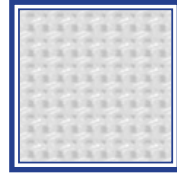
CLASSIC  
BLACK



CLASSIC  
GREY



CLASSIC  
LIGHT PEWTER



CLASSIC WHITE

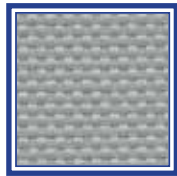
## ACOUSTICS AMERICA FABRICS



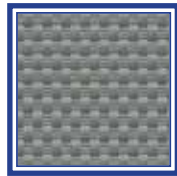
SEA FOAM  
WHITE



FULL MOON  
SILVER



INDUSTRIAL  
STEEL GREY



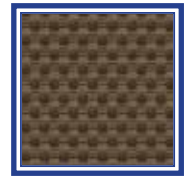
NATURAL  
STONE GREY



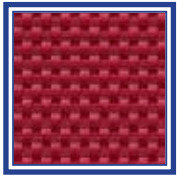
FREEDOM  
GREY



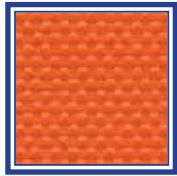
MIDNIGHT  
BLACK



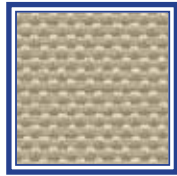
AMERICAN  
WALNUT



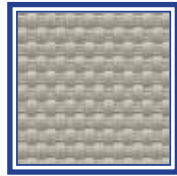
DELICIOUS  
APPLE RED



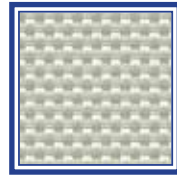
FALL HARVEST  
ORANGE



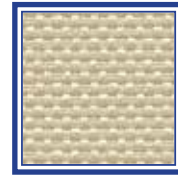
HEARTLAND  
WHEAT



BARNWOOD  
GREY



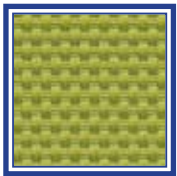
SAND SILVER



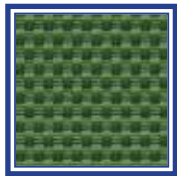
MOJAVE TAN



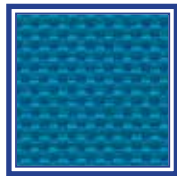
COUNTRY  
CREAM



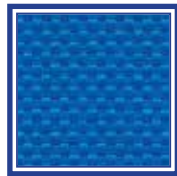
SAN JOAQUIN  
OLIVE



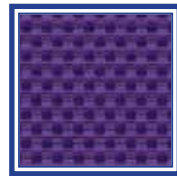
SILENT  
EVERGREEN



GREAT LAKES  
BLUE



WESTERN SKY  
BLUE



WILD PLUM



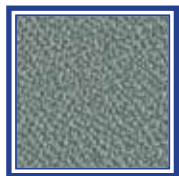
## GUILFORD OF MAINE ANCHORAGE-2335 FABRICS



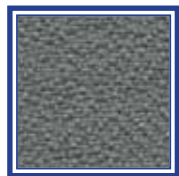
WHITE #2664



BIRCH #2129



SLATE #2017



WOLF #2027



GRAPHITE  
#2079



ONYX #2016

### Specifications

Content	65% pre-consumer recycled polyester 35% post-consumer recycled polyester
Weight	2334 - 13.1 ± 1.0 oz./lin. yd 2335 - 15.0 ± 1.0 oz./lin. yd
Width	2334 - 54" min. useable 2335 - 66" min. useable
Repeat	none

### Cleaning Code

Standard Care Label W-S. Clean with water based cleaning agents, foam or pure, water free solvents. Vacuuming or light brushing is recommended to prevent dust and soil buildup. May also be disinfected with hydrogen peroxide, alcohol, and quaternary ammonium (quat) based cleaners.

### Miscellaneous

- Application testing of this product is recommended.
- Colors may vary between dye lots.
- Please specify when ordering whether 54" or 66" width is needed. Dye lots may vary. Differences may also occur between corresponding colors of Anchorage 2335 and Open House 2334.

Proudly woven in North America supporting our local communities.

### Sustainability

100% recycled and recyclable

### Performance



Colorfastness to light (AATCC 16.3 Option 3)  
Grade 4 min. at 40 hours



Colorfastness to crocking (AATCC 8)  
Grade 4 min. dry & Grade 3 min. wet

Breaking Strength (ASTM D5034)  
275 lbf min. warp and fill



Seam Slippage (ASTM D4034)  
50 lbf min. warp and fill

Pilling Resistance (ASTM D3511)  
Class 4 min.



Flammability  
CA Technical Bulletin 117-2013 Section 1  
ASTM E84 Class I or A



A\* Abrasion (ASTM D4157)  
250,000 double rubs min. cotton duck

### Acoustical Performance

Our acoustic fabrics are all acoustically transparent. This represents the amount of sound that passes through the fabric.

Acoustic Transparency: 85%



This pattern is included in the underwriters laboratory panel fabric recognition program. Additional testing of this U.L. recognized fabric is not required on approved panels from participating manufacturers.

\*Multiple factors affect fabric durability and appearance retention, including end-user application and proper maintenance. Wyzenbeek results above 100,000 double rubs have not been shown to be an indicator of increased lifespan.

Certification Marks owned by the Association for Contract Textiles, Inc.



## GUILFORD OF MAINE FR701-2100 FABRICS



WHITE #224



EGGSHELL  
#144



BONE #748



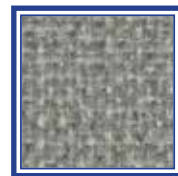
WHEAT #130



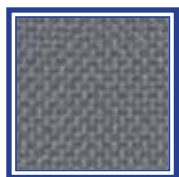
SILVER PAPIER  
#538



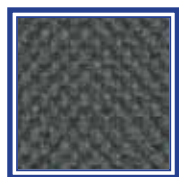
SILVER  
NEUTRAL #406



GREY MIX #238



STEEL GREY  
#471



FLANNEL #795



MEDIUM GREY  
#298



WEDGEWOOD  
#150



BLACK #408

## Specifications

Content	100% post-consumer recycled polyester
Weight	16.0 ± 0.5 oz./lin. yd
Width	66" min. useable
Repeat	none

## Cleaning Code

Standard Care Label W-S. Clean with water based cleaning agents, foam or pure, water free solvents. Vacuuming or light brushing is recommended to prevent dust and soil buildup.

Bleach Cleanable - May be cleaned with a 10% bleach-to-water solution. Rinse well after cleaning. May also be disinfected with hydrogen peroxide, alcohol, and quaternary ammonium (quat) based cleaners.

## Miscellaneous

Application testing of this product is recommended. Colors may vary between dye lots. This is a non-directional fabric.

Proudly woven in North America supporting our local communities.

## Sustainability

100% recycled and recyclable

## Performance



Colorfastness to light (AATCC 16.3 Option 3)  
Grade 4 min. at 40 hours



Colorfastness to crocking (AATCC 8)  
Grade 4 min. dry & Grade 3 min. wet



Breaking Strength (ASTM D5034)  
150 lbf min. warp and fill



Flammability  
ASTM E84 Class I or A

## Acoustical Performance

Our acoustic fabrics are all acoustically transparent. This represents the amount of sound that passes through the fabric.

Acoustic Transparency:

95%

For more detailed results, please consult our website.



This pattern is included in the underwriters laboratory panel fabric recognition program. Additional testing of this U.L. recognized fabric is not required on approved panels from participating manufacturers.

Certification Marks owned by the Association for Contract Textiles, Inc.